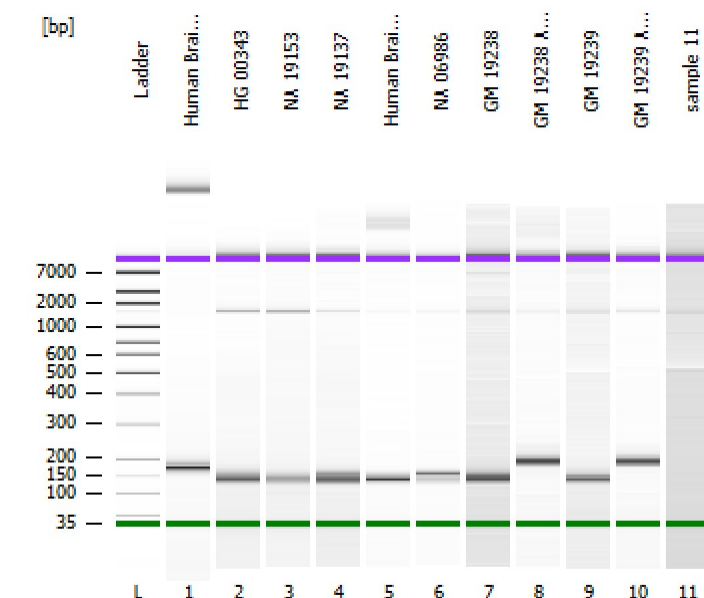


Assay Class: High Sensitivity DNA Assay
Data Path: C:\...gh Sensitivity DNA Assay_DE04105537_2011-11-24_11-40-38.xad

Created: 11/24/2011 11:40:38 AM
Modified: 11/24/2011 12:23:43 PM

Electrophoresis File Run Summary



Instrument Information:

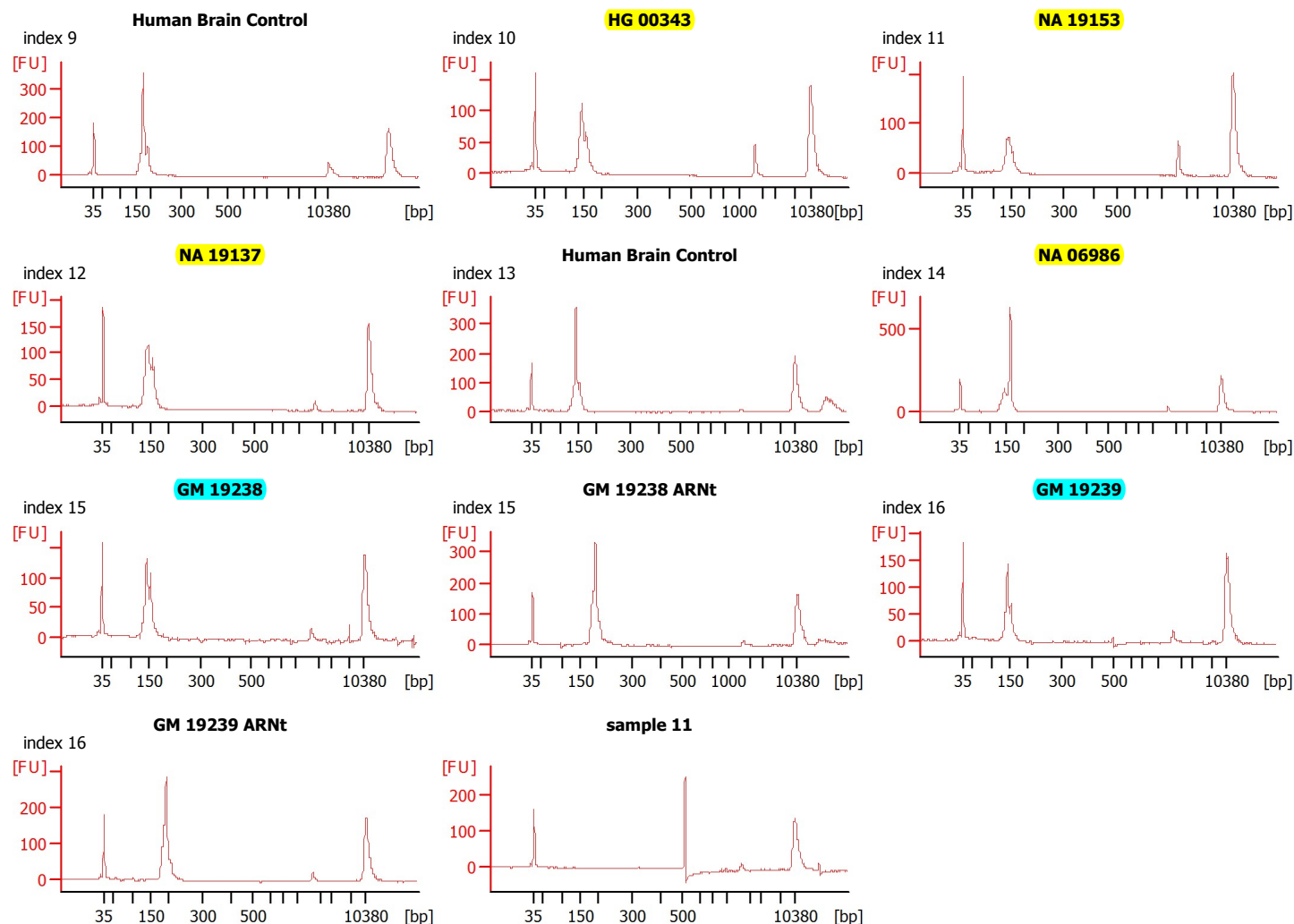
Instrument Name: DE04105537
Serial#: DE04105537
Firmware: C.01.069
Type: G2938C

Assay Information:

Assay Origin Path: C:\Program Files\Agilent\2100 bioanalyzer\2100 expert\assays\dsDNA\High Sensitivity DNA.xsy
Assay Class: High Sensitivity DNA Assay
Version: 1.03
Assay Comments: Copyright © 2003-2010 Agilent Technologies

Chip Information:

Chip Lot #:
Reagent Kit Lot #:
Chip Comments:



Assay Class: High Sensitivity DNA Assay
Data Path: C:\...gh Sensitivity DNA Assay_DE04105537_2011-11-24_11-40-38.xad

Created: 11/24/2011 11:40:38 AM
Modified: 11/24/2011 12:23:43 PM

Electrophoresis File Run Summary (Chip Summary)

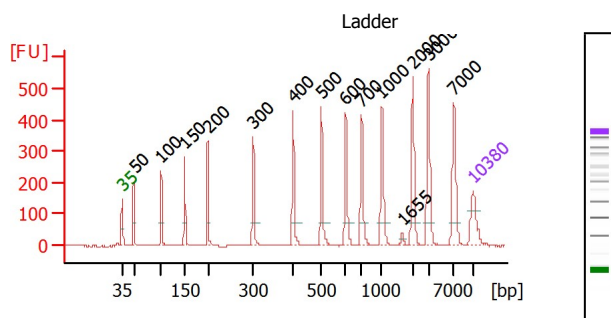
Sample Name	Sample Comment	Rest. Digest	Status	Observation	Result Label	Result Color
Human Brain Control	index 9	<input type="checkbox"/>	✓			
HG 00343	index 10	<input type="checkbox"/>	✓			
NA 19153	index 11	<input type="checkbox"/>	✓			
NA 19137	index 12	<input type="checkbox"/>	✓			
Human Brain Control	index 13	<input type="checkbox"/>	✓			
NA 06986	index 14	<input type="checkbox"/>	✓			
GM 19238	index 15	<input type="checkbox"/>	✓			
GM 19238 ARNt	index 15	<input type="checkbox"/>	✓			
GM 19239	index 16	<input type="checkbox"/>	✓			
GM 19239 ARNt	index 16	<input type="checkbox"/>	✓			
sample 11		<input type="checkbox"/>	✓			
Ladder		<input type="checkbox"/>	✓			
Chip Lot #			Reagent Kit Lot #			

Chip Comments :

Assay Class: High Sensitivity DNA Assay
 Data Path: C:\...gh Sensitivity DNA Assay_DE04105537_2011-11-24_11-40-38.xad

Created: 11/24/2011 11:40:38 AM
 Modified: 11/24/2011 12:23:43 PM

Electropherogram Summary



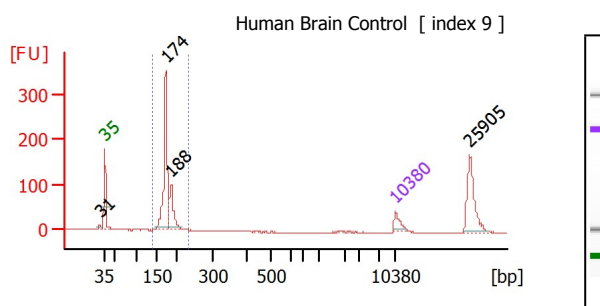
Overall Results for Ladder

Noise: 0.4

Peak table for Ladder

Peak	Size [bp]	Conc. [pg/μl]	Molarity [pmol/l]	Observations
1	35	125.00	5,411.3	Lower Marker
2	50	150.00	4,545.5	Ladder Peak
3	100	150.00	2,272.7	Ladder Peak
4	150	150.00	1,515.2	Ladder Peak
5	200	150.00	1,136.4	Ladder Peak
6	300	150.00	757.6	Ladder Peak
7	400	150.00	568.2	Ladder Peak
8	500	150.00	454.5	Ladder Peak
9	600	150.00	378.8	Ladder Peak
10	700	150.00	324.7	Ladder Peak
11	1,000	150.00	227.3	Ladder Peak
12	1,655	0.00	0.0	
13	2,000	150.00	113.6	Ladder Peak
14	3,000	150.00	75.8	Ladder Peak

Peak	Size [bp]	Conc. [pg/μl]	Molarity [pmol/l]	Observations
15	7,000	150.00	32.5	Ladder Peak
16	10,380	75.00	10.9	Upper Marker



Overall Results for sample 1 : Human Brain Control

Number of peaks found: 4
 Noise: 0.6
 Corr. Area 1: 706.0

Region table for sample 1 : Human Brain Control

From [bp]	To [bp]	Corr. Area	% of Total	Average Size [bp]	Size distribution in CV [%]	Conc. [pg/μl]	Molarity [pmol/l]	Color
138	231	706.0	71	177	6.3	1,534.14	13,126.0	Blue

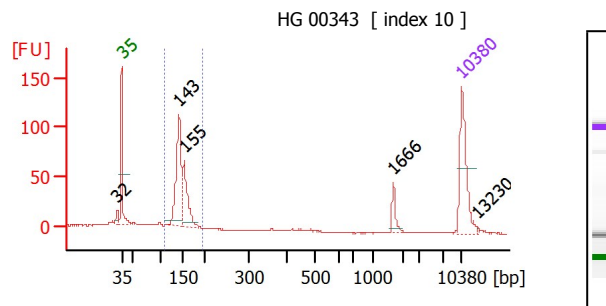
Assay Class: High Sensitivity DNA Assay
 Data Path: C:\...gh Sensitivity DNA Assay_DE04105537_2011-11-24_11-40-38.xad

Created: 11/24/2011 11:40:38 AM
 Modified: 11/24/2011 12:23:43 PM

Electropherogram Summary Continued ...

Peak table for sample 1 : Human Brain Control

Peak	Size [bp]	Conc. [pg/μl]	Molarity [pmol/l]	Observations
1	31	0.00	0.0	
2	35	125.00	5,411.3	Lower Marker
3	174	1,126.64	9,801.4	
4	188	393.18	3,161.4	
5	10,380	75.00	10.9	Upper Marker
6	25,905	0.00	0.0	



Overall Results for sample 2 : HG 00343

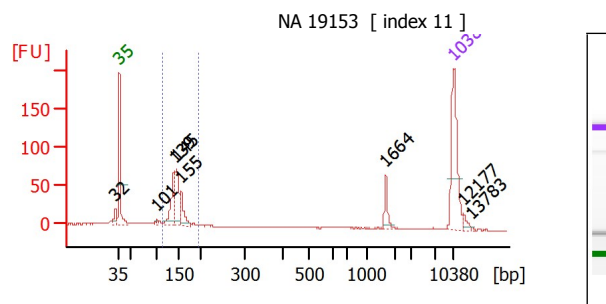
Number of peaks found: 5
 Noise: 0.4
 Corr. Area 1: 433.8

Region table for sample 2 : HG 00343

From [bp]	To [bp]	Corr. Area	% of Total	Average Size [bp]	Size distribution in CV [%]	Conc. [pg/μl]	Molarity [pmol/l]	Color
110	197	433.8	72	148	8.0	302.43	3,121.3	Blue

Peak table for sample 2 : HG 00343

Peak	Size [bp]	Conc. [pg/μl]	Molarity [pmol/l]	Observations
1	32	0.00	0.0	
2	35	125.00	5,411.3	Lower Marker
3	143	186.28	1,970.8	
4	155	98.52	964.5	
5	1,666	16.88	15.4	
6	10,380	75.00	10.9	Upper Marker
7	13,230	0.00	0.0	



Overall Results for sample 3 : NA 19153

Number of peaks found: 8
 Noise: 0.4
 Corr. Area 1: 337.0

Region table for sample 3 : NA 19153

From [bp]	To [bp]	Corr. Area	% of Total	Average Size [bp]	Size distribution in CV [%]	Conc. [pg/μl]	Molarity [pmol/l]	Color
112	195	337.0	60	146	8.4	178.91	1,872.9	Blue

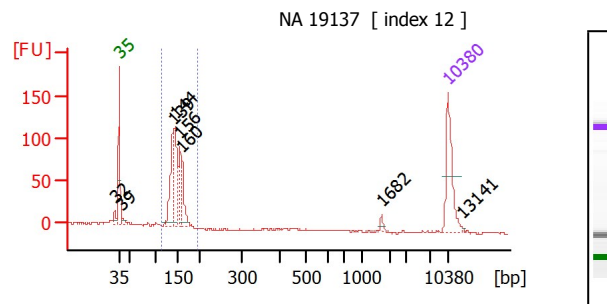
Assay Class: High Sensitivity DNA Assay
 Data Path: C:\...gh Sensitivity DNA Assay_DE04105537_2011-11-24_11-40-38.xad

Created: 11/24/2011 11:40:38 AM
 Modified: 11/24/2011 12:23:43 PM

Electropherogram Summary Continued ...

Peak table for sample 3 : NA 19153

Peak	Size [bp]	Conc. [pg/μl]	Molarity [pmol/l]	Observations
1	32	0.00	0.0	
2	35	125.00	5,411.3	Lower Marker
3	101	6.72	100.7	
4	139	66.46	726.4	
5	145	64.68	677.0	
6	155	41.87	408.9	
7	1,664	16.72	15.2	
8	10,380	75.00	10.9	Upper Marker
9	12,177	0.00	0.0	
10	13,783	0.00	0.0	



Overall Results for sample 4 : NA 19137

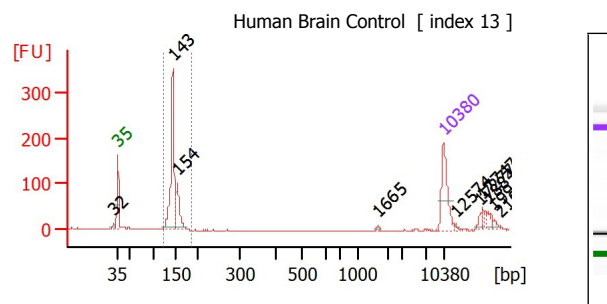
Number of peaks found: 8
 Noise: 0.5
 Corr. Area 1: 562.6

Region table for sample 4 : NA 19137

From [bp]	To [bp]	Corr. Area	% of Total	Average Size [bp]	Size distribution in CV [%]	Conc. [pg/μl]	Molarity [pmol/l]	Color
111	195	562.6	83	147	7.3	381.67	3,950.5	Blue

Peak table for sample 4 : NA 19137

Peak	Size [bp]	Conc. [pg/μl]	Molarity [pmol/l]	Observations
1	32	0.00	0.0	
2	35	125.00	5,411.3	Lower Marker
3	39	10.77	418.4	
4	139	110.21	1,198.6	
5	144	145.67	1,531.8	
6	156	64.54	628.4	
7	160	60.00	566.7	
8	1,682	4.81	4.3	
9	10,380	75.00	10.9	Upper Marker
10	13,141	0.00	0.0	



Overall Results for sample 5 : Human Brain Control

Number of peaks found: 10
 Noise: 0.5
 Corr. Area 1: 699.1

Region table for sample 5 : Human Brain Control

From [bp]	To [bp]	Corr. Area	% of Total	Average Size [bp]	Size distribution in CV [%]	Conc. [pg/μl]	Molarity [pmol/l]	Color
121	187	699.1	80	145	5.4	398.73	4,178.9	Blue

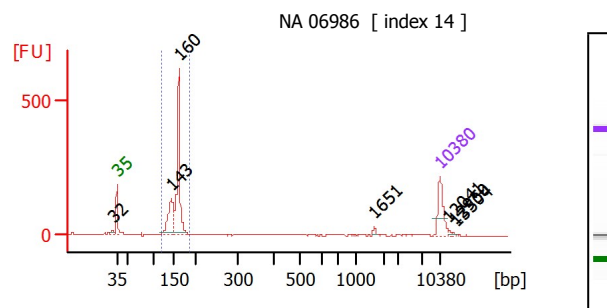
Assay Class: High Sensitivity DNA Assay
 Data Path: C:\...gh Sensitivity DNA Assay_DE04105537_2011-11-24_11-40-38.xad

Created: 11/24/2011 11:40:38 AM
 Modified: 11/24/2011 12:23:43 PM

Electropherogram Summary Continued ...

Peak table for sample 5 : Human Brain Control

Peak	Size [bp]	Conc. [pg/μl]	Molarity [pmol/l]	Observations
1	32	0.00	0.0	
2	35	125.00	5,411.3	Lower Marker
3	143	306.86	3,248.0	
4	154	91.38	900.4	
5	1,665	2.42	2.2	
6	10,380	75.00	10.9	Upper Marker
7	12,574	0.00	0.0	
8	17,277	0.00	0.0	
9	17,747	0.00	0.0	
10	18,844	0.00	0.0	
11	19,941	0.00	0.0	
12	21,078	0.00	0.0	



Overall Results for sample 6 : NA 06986

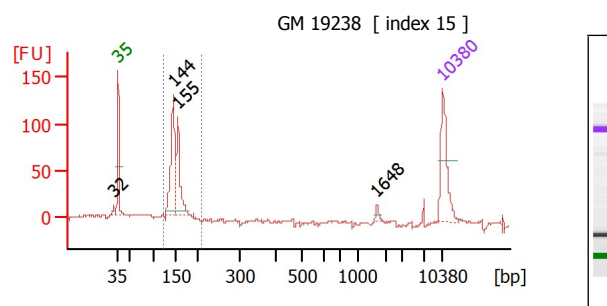
Number of peaks found: 7
 Noise: 0.5
 Corr. Area 1: 1,096.2

Region table for sample 6 : NA 06986

From [bp]	To [bp]	Corr. Area	% of Total	Average Size [bp]	Size distribution in CV [%]	Conc. [pg/μl]	Molarity [pmol/l]	Color
119	187	1,096.2	93	154	6.7	592.07	5,859.2	Blue

Peak table for sample 6 : NA 06986

Peak	Size [bp]	Conc. [pg/μl]	Molarity [pmol/l]	Observations
1	32	0.00	0.0	
2	35	125.00	5,411.3	Lower Marker
3	143	195.91	2,071.1	
4	160	397.99	3,759.0	
5	1,651	6.26	5.7	
6	10,380	75.00	10.9	Upper Marker
7	12,041	0.00	0.0	
8	12,950	0.00	0.0	
9	13,504	0.00	0.0	



Overall Results for sample 7 : GM 19238

Number of peaks found: 4
 Noise: 0.6
 Corr. Area 1: 486.7

Region table for sample 7 : GM 19238

From [bp]	To [bp]	Corr. Area	% of Total	Average Size [bp]	Size distribution in CV [%]	Conc. [pg/μl]	Molarity [pmol/l]	Color
122	209	486.7	65	150	8.4	347.25	3,534.5	Blue

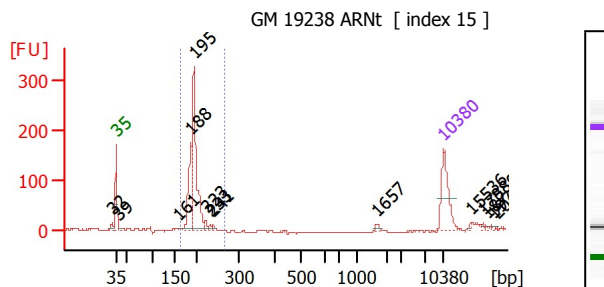
Assay Class: High Sensitivity DNA Assay
 Data Path: C:\...gh Sensitivity DNA Assay_DE04105537_2011-11-24_11-40-38.xad

Created: 11/24/2011 11:40:38 AM
 Modified: 11/24/2011 12:23:43 PM

Electropherogram Summary Continued ...

Peak table for sample 7 : GM 19238

Peak	Size [bp]	Conc. [pg/μl]	Molarity [pmol/l]	Observations
1	32	0.00	0.0	
2	35	125.00	5,411.3	Lower Marker
3	144	187.29	1,975.6	
4	155	117.17	1,146.9	
5	1,648	5.24	4.8	
6	10,380	75.00	10.9	Upper Marker



Overall Results for sample 8 : GM 19238 ARNt

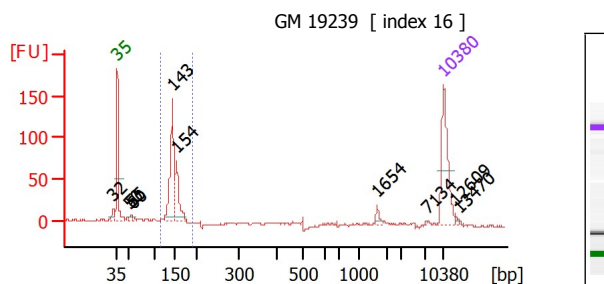
Number of peaks found: 14
 Noise: 0.5
 Corr. Area 1: 825.7

Region table for sample 8 : GM 19238 ARNt

From [bp]	To [bp]	Corr. Area	% of Total	Average Size [bp]	Size distribution in CV [%]	Conc. [pg/μl]	Molarity [pmol/l]	Co lo
163	266	825.7	93	196	5.4	429.94	3,333.0	

Peak table for sample 8 : GM 19238 ARNt

Peak	Size [bp]	Conc. [pg/μl]	Molarity [pmol/l]	Observations
1	32	0.00	0.0	
2	35	125.00	5,411.3	Lower Marker
3	39	4.34	169.7	
4	161	2.92	27.5	
5	188	129.37	1,041.6	
6	195	301.02	2,339.4	
7	223	12.93	87.7	
8	233	6.05	39.3	
9	241	6.10	38.4	
10	1,657	4.59	4.2	
11	10,380	75.00	10.9	Upper Marker
12	15,536	0.00	0.0	
13	17,880	0.00	0.0	
14	18,739	0.00	0.0	
15	19,716	0.00	0.0	
16	20,458	0.00	0.0	



Overall Results for sample 9 : GM 19239

Number of peaks found: 10
 Noise: 1.0
 Corr. Area 1: 371.2

Region table for sample 9 : GM 19239

From [bp]	To [bp]	Corr. Area	% of Total	Average Size [bp]	Size distribution in CV [%]	Conc. [pg/μl]	Molarity [pmol/l]	Co lo
116	189	371.2	75	146	6.3	226.73	2,361.8	

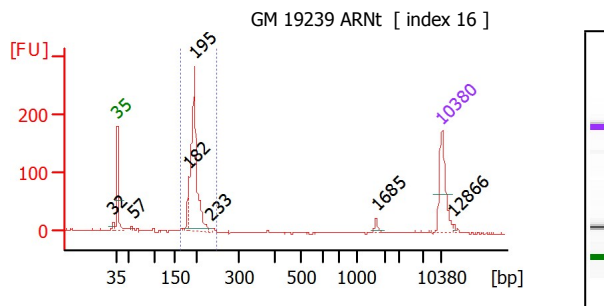
Assay Class: High Sensitivity DNA Assay
 Data Path: C:\...gh Sensitivity DNA Assay_DE04105537_2011-11-24_11-40-38.xad

Created: 11/24/2011 11:40:38 AM
 Modified: 11/24/2011 12:23:43 PM

Electropherogram Summary Continued ...

Peak table for sample 9 : GM 19239

Peak	Size [bp]	Conc. [pg/μl]	Molarity [pmol/l]	Observations
1	32	0.00	0.0	
2	35	125.00	5,411.3	Lower Marker
3	50	3.66	111.0	
4	55	6.55	179.5	
5	60	4.24	106.8	
6	143	151.32	1,604.4	
7	154	73.90	729.4	
8	1,654	6.10	5.6	
9	7,134	0.64	0.1	
10	10,380	75.00	10.9	Upper Marker
11	12,609	0.00	0.0	
12	13,470	0.00	0.0	



Overall Results for sample 10 : GM 19239 ARNt

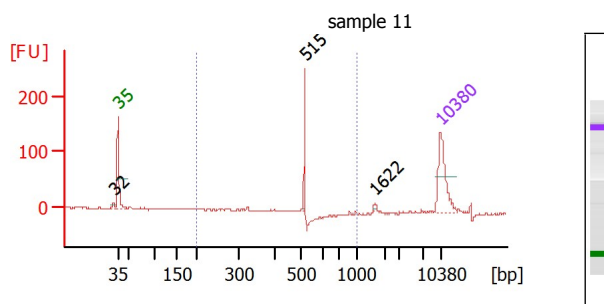
Number of peaks found: 7
 Noise: 0.4
 Corr. Area 1: 693.3

Region table for sample 10 : GM 19239 ARNt

From [bp]	To [bp]	Corr. Area	% of Total	Average Size [bp]	Size distribution in CV [%]	Conc. [pg/μl]	Molarity [pmol/l]	Color
162	246	693.3	88	195	5.4	361.32	2,813.8	Blue

Peak table for sample 10 : GM 19239 ARNt

Peak	Size [bp]	Conc. [pg/μl]	Molarity [pmol/l]	Observations
1	32	0.00	0.0	
2	35	125.00	5,411.3	Lower Marker
3	57	3.49	93.2	
4	182	41.90	348.5	
5	195	317.82	2,465.0	
6	233	2.58	16.8	
7	1,685	7.51	6.7	
8	10,380	75.00	10.9	Upper Marker
9	12,866	0.00	0.0	



Overall Results for sample 11 : sample 11

Number of peaks found: 3
 Noise: 0.5
 Corr. Area 1: 105.8

Region table for sample 11 : sample 11

From [bp]	To [bp]	Corr. Area	% of Total	Average Size [bp]	Size distribution in CV [%]	Conc. [pg/μl]	Molarity [pmol/l]	Color
200	1,000	105.8	63	496	12.8	46.63	147.4	Blue

Peak table for sample 11 : sample 11

Peak	Size [bp]	Conc. [pg/μl]	Molarity [pmol/l]	Observations
1	32	0.00	0.0	
2	35	125.00	5,411.3	Lower Marker
3	515	37.72	110.9	
4	1,622	4.07	3.8	
5	10,380	75.00	10.9	Upper Marker

Assay Class: High Sensitivity DNA Assay
Data Path: C:\...gh Sensitivity DNA Assay_DE04105537_2011-11-24_11-40-38.xad

Created: 11/24/2011 11:40:38 AM
Modified: 11/24/2011 12:23:43 PM

Gel Image